

LAD3



cable junction box extremely slim design, height only 13mm, with strain relief for the helix cable, integrated 6-pin screw terminal (removable and mountable in the box), long-living rubber seals, optional cable entry (side or base)

Material: PA6 GF30

Color: black

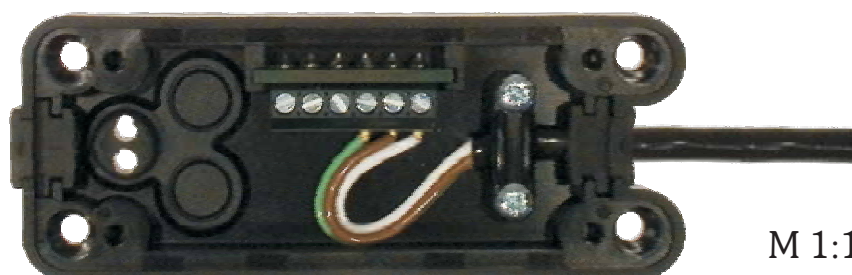
Degree of protection: IP65 can be guaranteed by use of predefined cable outside diameters and professional assembling

Size: 86x35x13mm³ (LxWxH)

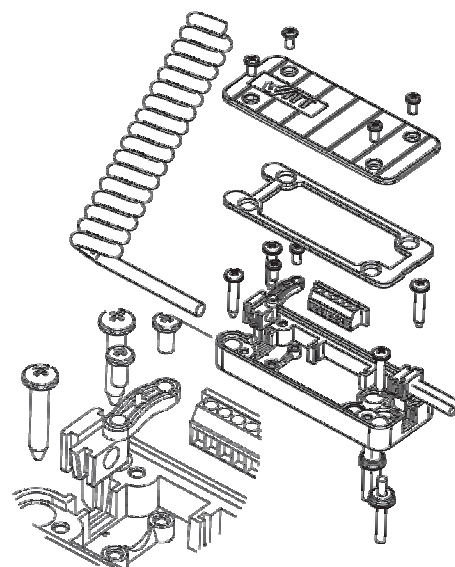
Ordering details

LAD3

1.114 170



M 1:1



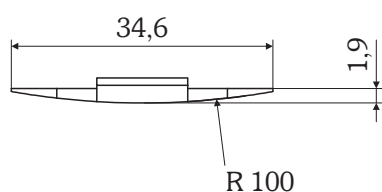
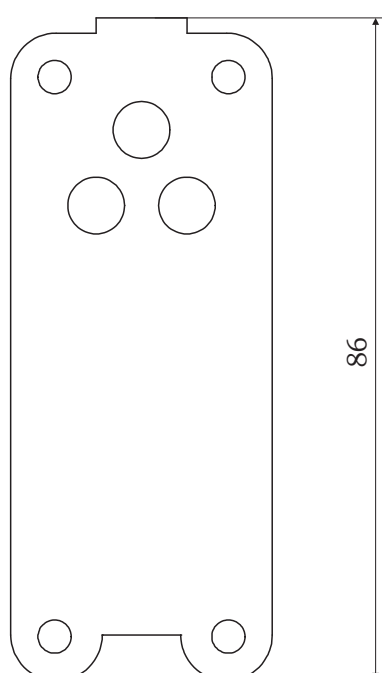
LAD3 mounting adapter

LAD3 Mounting adapter, provides a stable mounting surface when fitting the LAD3 junction box to the concave side of an aluminium slat of a typical light weight roller shutter door.

Material: rubber-like TPE

Ordering details

mounting adapter LAD3 1.114 179



M 1:1

