



1. APLICATIONS

Equipment designed for operating rolling shutters, with limit switches integrated on motor. Up to a maximum power of 736 W. Receiver integrated on control panel for 433 or 868 Mhz transmitters (depending on version).

2. OPERATION

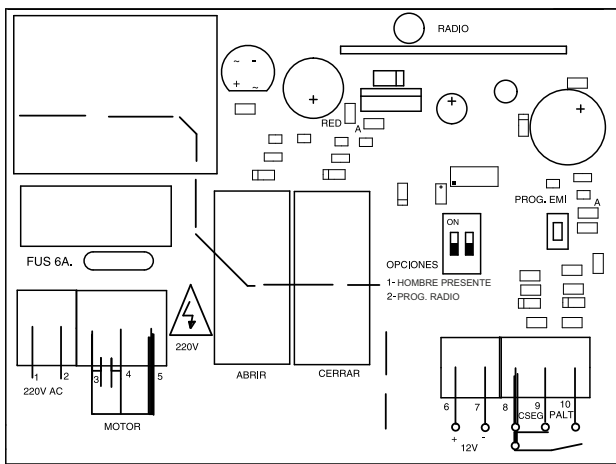
Protected inputs for operations. Protection of main feed and motor with fuse 6A and Varistore. Power-ON led. START button and Safety contact inputs. You could start an operation with an emitter or with START button.

The operation Ends due to the follow conditions: activation of door limit switches or by the end of operation time. The maneuver time is programmable by PROG. button. The default time is 30 seconds without automatic closing.

The equipment allows the programming of closing time. (see point 6.)

Emitter and the START button activate the same function. If the door is in an opening operation and we push the emitter or START button the door stops, if we push another time the door starts a closing operation, if we push another time the door starts an opening operation, and successively. (OPEN - STOP - CLOSE - STOP - OPEN)

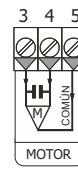
3. TERMINAL CONNECTIONS



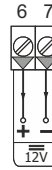
POWER SUPPLY



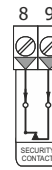
MONOPHASE MOTOR



ACCESSORIES POWER SUPPLY



SAFETY



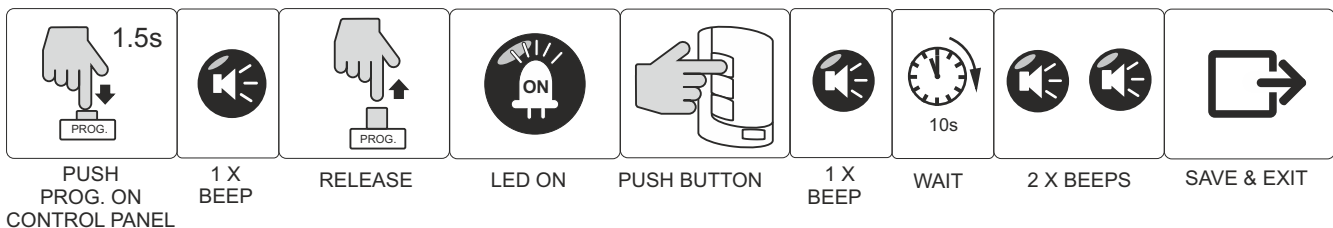
PUSH BUTTON



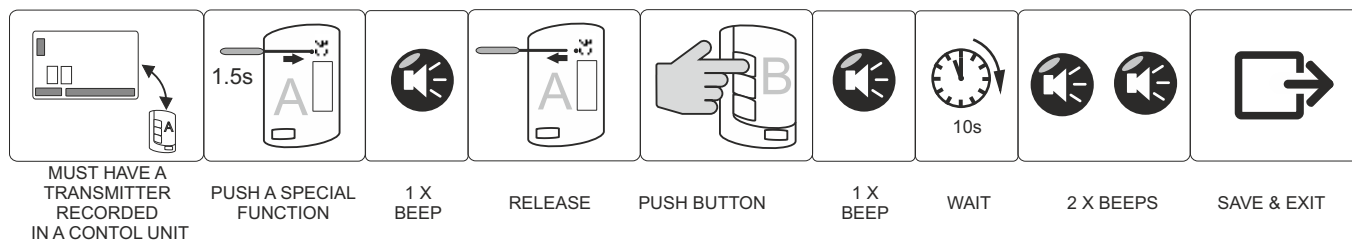
4. OPTIONS SELECTOR

DEAD MAN (HOMBRE PRESENTE)		- For closing operation you must press continually the START button or the Emitter. If you do not press the button the door stops.
		- Not allowed.
RADIO PROGRAMMING (PROG. RADIO)		- Allowed.
		- Not allowed.

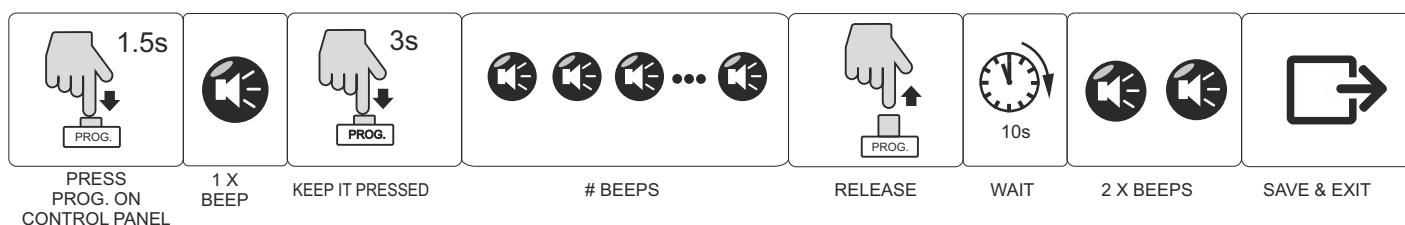
5. TRANSMITTER PROGRAMMING



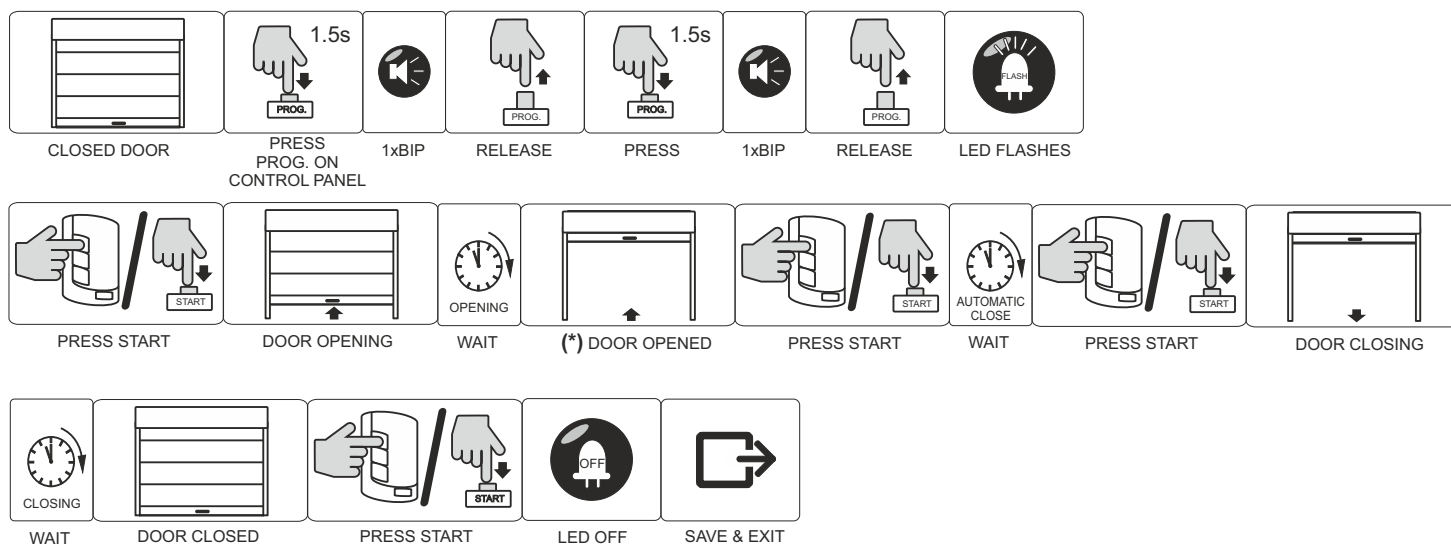
5.1 TRANSMITTER RADIO PROGRAMMING



5.2 TIME AND TRANSMITTERS MEMORY RESET



6. MANEUVER PROGRAMMING TIME (START push button or transmitter)



**(*) If don't want automatic closing, before 5 seconds push start button or transmitter.
If want automatic closing, push START button or transmitter when finish the desired time.**

TECHNICAL CHARACTERISTICS

Power Supply	230V AC +/- 10%
Motor power	736 W / 1 HP
Accessories power supply	12 Vdc 150 mA
Max. Functioning time	2 minutes
Max. Closing time	2 minutes
Code Combinations	72.000 Billion codes
Number of Codes	31 Codes
Code Programming	Self - taught
Frequency (depending on version)	433,92 or 868,35MHz
Homologations	Conforms to ETS 300-220/ETS300-683
Sensitivity	Better than -100dBm
Distance	Max. 60 metres
Aerial	Incorporated
Temperature	-20 to 85°C

CE DECLARATION OF CONFORMITY
For more information visit the website www.aerf.eu

