



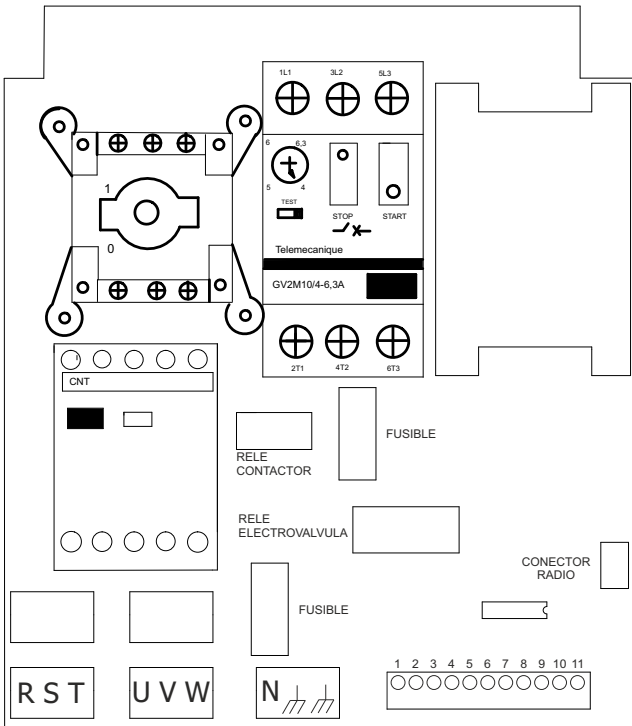
1. APPLICATIONS

- Control unit for hydraulic operator for loading docks and ramps.
- Power supply visual indication.
- Removable terminal connections.
- Optional Radio Card.

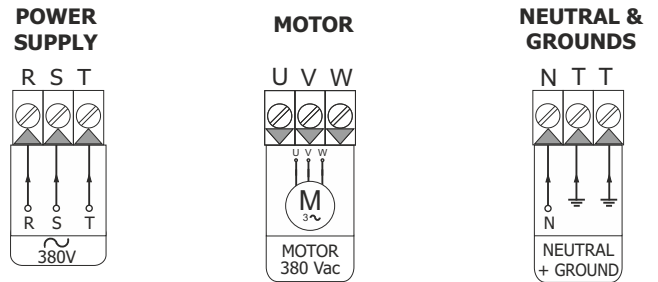
2. OPERATION

- S1 keep hold to activate the motor; electro-valve active during the action.
- S2 deactivates motor and the electro-valve.
- FC1 deactivates the motor.
- FC2 deactivates the electro-valve.

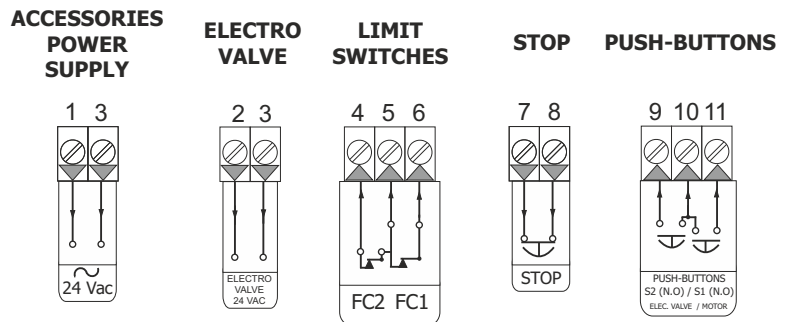
3. CONNECTIONS



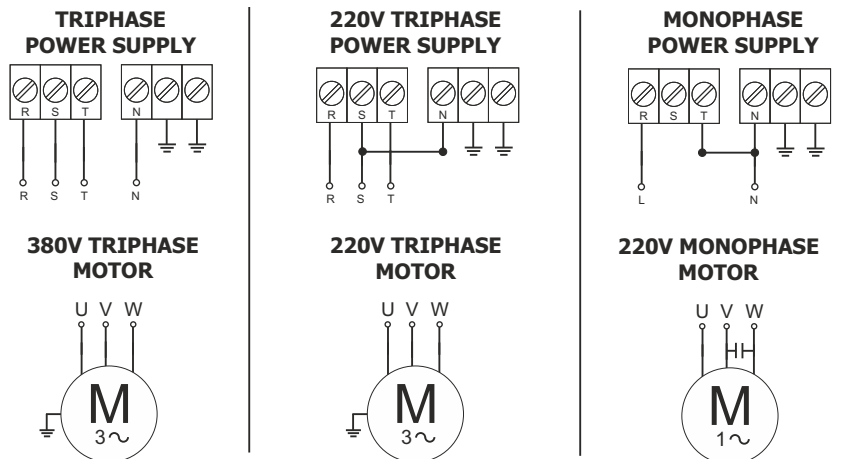
3.1 POWER SUPPLY & GROUND



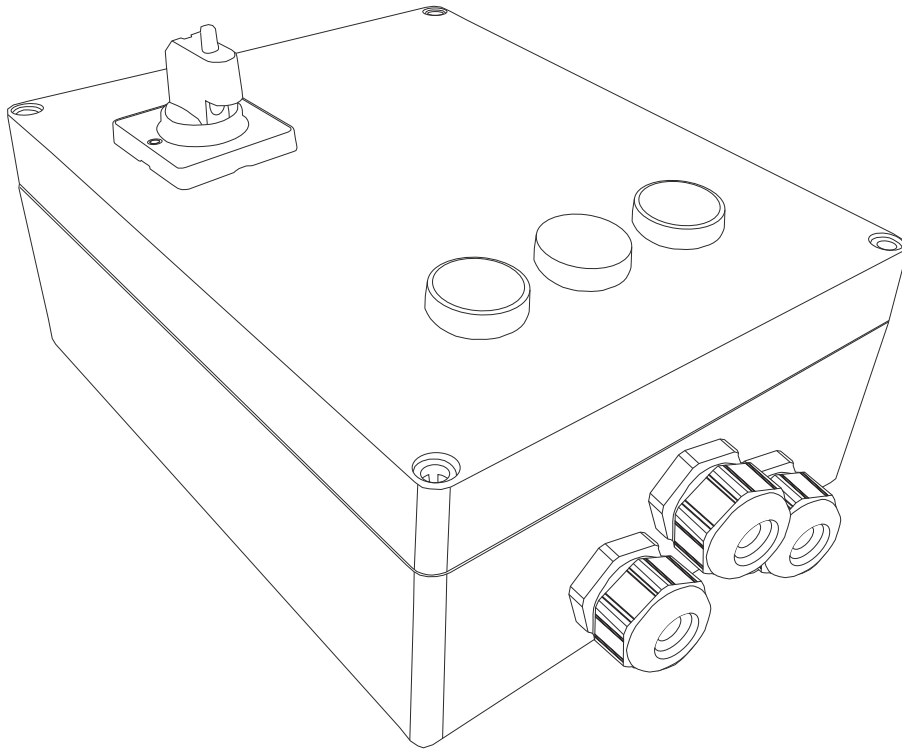
3.2 TERMINALS



3.3 POWER SUPPLY & MOTOR CONNECTIONS



6. BOX HOUSING

**TECHNICAL SPECIFICATIONS**

Power supply	380V AC +/- 10%
Fuse	1-2 A.
Radio Card	Optional
Working temperature	-20 to 85°C

CE DECLARATION OF CONFORMITY
For more information visit the website www.aerf.eu

WARNING!!

- Equipment installation and start-up, can only be executed by qualified personal.

