



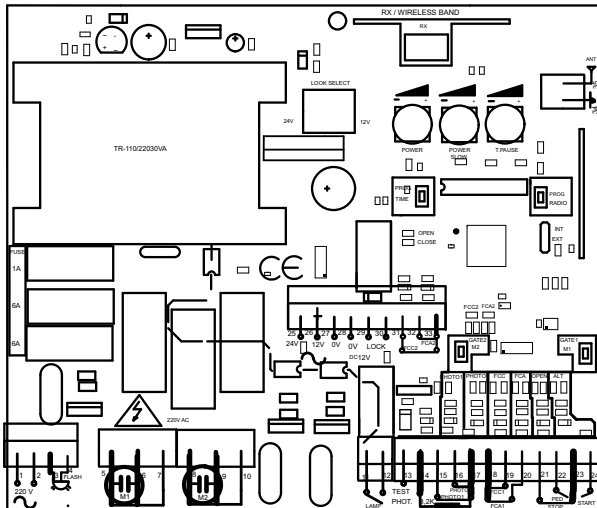
## 1. APPLICATIONS

Control panel powered at 230V with integrated radio designed to control 2 motors (electromechanical or hydraulic). Programming allows different offset times in opening and closing, force regulation and slow down at the end of opening or closing operation, with led indications for inputs. It is compatible with an extra radio by SRT Band and SRT card respectively.

## 2. OPERATING INSTRUCTIONS

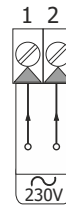
Automatic manoeuvres are carried out using the START (23-24), STOP (21-23), PED (22-23), inputs and if required using the radio transmitters. The manoeuvre finishes under any of the following conditions: by activating the corresponding limit switch or due to working time finishing. Activating STOP (21-23) will immediately stop the manoeuvre and new command will be required to continue. Activating the Safety Contact (16-17) during the closing manoeuvre will cause the inverse, activating the opening manoeuvre. The contact for Garage Light is activated 0,5 sec. before starting the opening manoeuvre and deactivated 3 sec. after starting. Electric motor power is operative 2 seconds after the start of the manoeuvre. (For hydraulic operators use power at maximum). Slow down time (selected in the working time programme) is the time before finishing the manoeuvre that the operator will work slow. In POWER SLOW (green) we can select operator speed in slow down time when I7 is ON (Not available with hydraulic operators(18 ON)). The control unit has the indication of opening and closing manoeuvre by two red leds.

## 3. CONNECTIONS

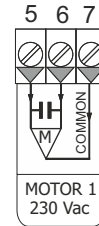


### 3.1 POWER SUPPLY & MOTOR CONNECTIONS

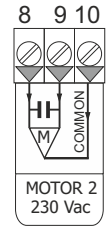
POWER SUPPLY



MOTOR 1

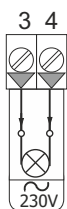


MOTOR 2

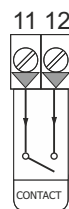


### 3.2 TERMINAL CONNECTIONS

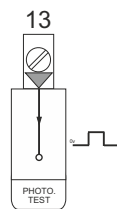
FLASH



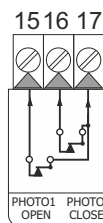
GARAGE LIGHT



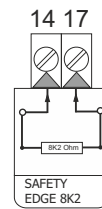
PHOTOCELL TEST



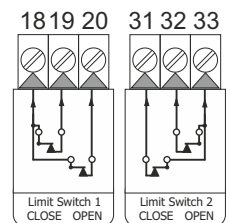
SAFETY CONTACTS



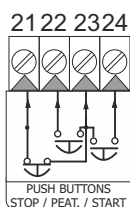
SAFETY EDGE



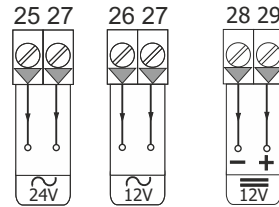
LIMIT SWITCHES



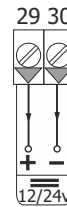
TERMINAL PUSH BUTTONS



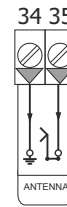
ACCESSORIES POWER SUPPLY



ELECTROLOCK (see point 5.)



ANTENNA



### 4. BRIDGE SELECTORS

Radio Internal / External



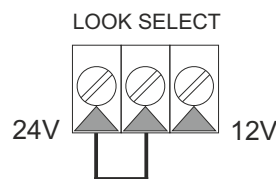
Lower selector - External



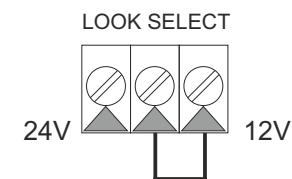
Upper selector - Internal

### 5. ELECTRO-LOCK POWER SUPPLY

ELECTRO-LOCK or ELECTROMAGNET 24V DC\*



ELECTRO-LOCK or ELECTROMAGNET 12V DC\*



\*SEE POINT 6, OPTION 3 FOR ELECTRO-LOCK OR ELECTROMAGNET SELECTION

### 6. OPTIONS

|    |                             |  |   |
|----|-----------------------------|--|---|
| 1  | AUTOMATIC CLOSING           |  | - Door closes automatically after waiting the a.c. time.  |
|    |                             |  | - Door does not close automatically.  |
| 2  | DISABLE STOP OPENING        |  | - The ALTER button (23-24), transmitter or GATE 1 button, can't stop the door on opening.                                     |
|    |                             |  | - Door stops on opening with transmitter, GATE 1 or ALTER (23-24) buttons.  |
| 3  | ELECTROLOCK OUTPUT FUNCTION |  | - Electromagnet operation.  |
|    |                             |  | - Electro-lock operation.   |
| 4  | INVERSION SHUT              |  | - Before opening, the electro lock and closure relay are activated.   |
|    |                             |  | - Normal opening with electro lock.   |
| 5  | CLOSING BY SAFETY CONTACT   |  | - Door closes when close safety contact (16-17) is deactivated or when finishes the programmed time. (only with option 1 ON.) |
|    |                             |  | - Close safety contact (16-17) normal operation, working only during the closing manoeuvre.                                   |
| 6  | FLASHING LIGHT              |  | - Flashing.   |
|    |                             |  | - Fixed.  |
| 7  | SLOW DOWN                   |  | - At the end of opening and closing manoeuvre, the door does a slow down. (with option 8 ON, does a impulse every 3 hours.)   |
|    |                             |  | - Without slow down.  |
| 8  | MOTOR TYPE                  |  | - For hydraulic motors with pressure switch.  |
|    |                             |  | - For electro-mechanical motors.  |
| 9  | HYDRAULIC RAM               |  | - Before slow down, closing manoeuvre is activated at maximum power during 2 seconds.   |
|    |                             |  | - Normally close.   |
| 10 | PHOTOCELL TEST              |  | - Activated.  |
|    |                             |  | - Deactivated.  |

### 7. POTENTIOMETERS

POWER (RED)



OPTION 8 OFF - Motor Power regulation.  
 OPTION 8 ON - Motor 1 Pressure Switch.  
 Rotate LEFT to decrease and rotate RIGHT to increase.

POWER SLOW (GREEN)



OPTION 8 OFF & 7 ON - Soft Stop Motor regulation  
 OPTION 8 ON - Motor 2 Pressure Switch Inhibition time  
 Rotate to LEFT to decrease and rotate to RIGHT to increase.

AUTOMATIC CLOSING TIME (BLUE)



Regulates the waiting time before the automatic close. Turn LEFT to decrease and RIGHT to increase.  
 Minimum - 3 seg.  
 Maximum - 120 seg.

## 8. DIGITAL TIME PROGRAMMING for working and automatic closing.

### OPENING PROGRAMMATION

- DOORS CLOSED  
- START PROGRAMMATION WITH "PROG. TIME" BOUTON (LED ON)

1 GATE 1 LEAF 1 LEAF 2 DELAY GATE 2 LEAF 2

2 GATE 1 LEAF 1 LEAF 2

3 GATE 2 LEAF 2 LEAF 1

4 GATE 1 LEAF 1 LEAF 2

5 GATE 2 LEAF 2 LEAF 1

- DOORS OPENING...  
- START SLOW DOWN (ONLY WITH OPTION 7 ON)

1 GATE 1 LEAF 1 LEAF 2

2 GATE 2 LEAF 2 LEAF 1

- STOP DOORS BY LIMIT SWITCHES OR GATE 1 & GATE 2 BUTTONS.

1 GATE 1 LEAF 1 LEAF 2

2 GATE 2 LEAF 2 LEAF 1

- DOORS OPENED  
- IF AUTOMATIC CLOSING IS ON, START A.C. TIME  
- FOLLOW CLOSING PROGRAMMATION

### CLOSING PROGRAMMATION

- DOORS OPENED  
- START CLOSING PROGRAMMATION

1 GATE 2 LEAF 2 LEAF 1 LEAF 2 DELAY GATE 1 LEAF 1 LEAF 2

2 GATE 2 LEAF 2 LEAF 1

3 GATE 1 LEAF 1 LEAF 2

4 GATE 2 LEAF 2 LEAF 1

5 GATE 1 LEAF 1 LEAF 2

- DOORS CLOSING...  
- START SLOW DOWN (ONLY WITH OPTION 7 ON)

1 GATE 2 LEAF 2 LEAF 1

2 GATE 1 LEAF 1 LEAF 2

- STOP DOORS BY LIMIT SWITCHES OR GATE 1 & GATE 2 BUTTONS.

1 GATE 2 LEAF 2 LEAF 1

2 GATE 1 LEAF 1 LEAF 2

- DOORS CLOSED  
- SAVE & EXIT (LED OFF)

IF IS USED ONLY A ONE MOTOR, MAKES THE PROGRAMMING PROCESS WITH GATE 1 BUTTON.

## 9. PROGRAMING A TRANSMITTER

1.5s  
PRESS BUTTON  
PROG. RADIO

1 X  
FLASH

RELEASE

LED ON

PRESS BUTTON

1 X  
FLASH

WAIT  
10s

2 X  
FLASH

SAVE & EXIT

### 9.1 TRANSMITTER RADIO PROGRAMMING

MUST HAVE A  
TRANSMITTER RECORDED  
IN A CONTOL UNIT

1.5s  
PUSH A  
SPECIAL  
FUNCTION

1 X  
FLASH

RELEASE

PUSH  
BUTTON

1 X  
FLASH

WAIT  
10s

2 X  
FLASHES

SAVE & EXIT

### 9.2 MEMORY RESET

1.5s  
PRESS  
PROG. RADIO

1 X  
FLASH

3s  
KEEP IT  
PRESSED

#  
FLASHES

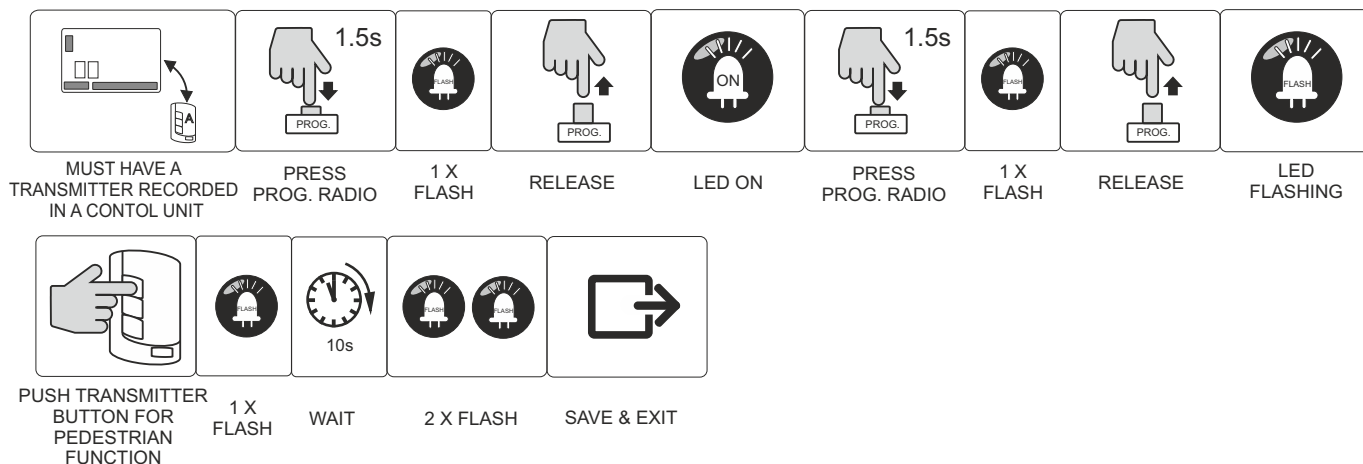
RELEASE

WAIT  
10s

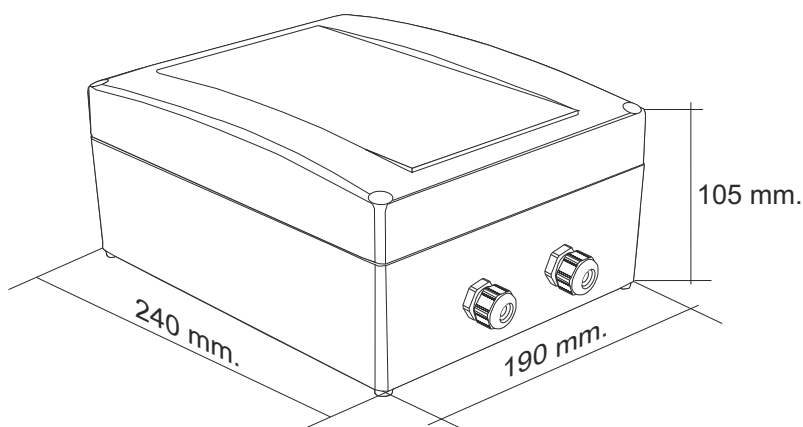
2 X  
FLASH

SAVE & EXIT

## 10. TRANSMITTER PEDESTRIAN CHANNEL PROGRAMMATION



## 10. BOX HOUSING



### TECHNICAL SPECIFICATIONS

|                               |                                       |
|-------------------------------|---------------------------------------|
| Alimentation                  | 230V AC +/- 10%                       |
| Motor Power                   | 550w (0,74 HP)                        |
| Accessory alimentation output | 12V/24V AC 250mA                      |
| Automatic closing time        | 5 seg a 2 min                         |
| Working time                  | Max. 2 min                            |
| Code Combinations             | 72.000 Billions of codes /4000 binary |
| Number of Codes               | 255 codes                             |
| Code Programming              | Automatic learning                    |
| Function Selector             | Transmitter memorized                 |
| Garage Light Time             | 3 s.                                  |
| Garage Light Contact          | 10 A a 230V                           |
| Frequency                     | 433,92 Mhz (868 Mhz)                  |
| Normative                     | Conforms to ETS 300-220/ETS 300-683   |
| Sensibility                   | Better than -100dBm                   |
| Range                         | Max. 60 m                             |
| Antenna                       | Built in                              |
| Working Temperature           | -20 to 85°C                           |

CE DECLARATION OF CONFORMITY  
For more information visit the website [www.aerf.eu](http://www.aerf.eu)

## WARNING!!

- Equipment installation and start-up, can only be executed by qualified personal.

