



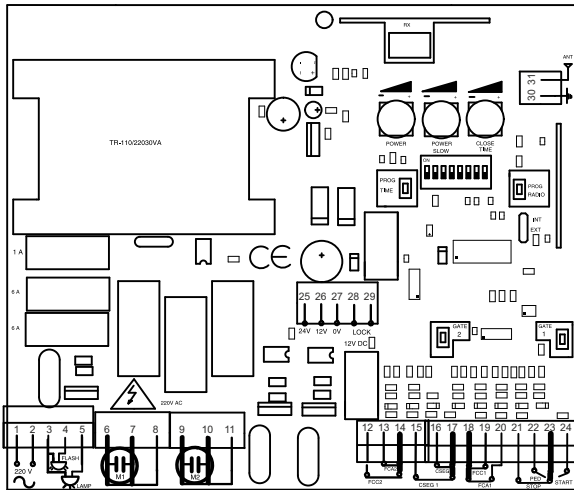
1. APPLICATIONS

Control panel powered at 230V with integrated radio designed to control 2 motors (electromechanical or hydraulic). Programming allows different offset times in opening and closing, force regulation and buffer stop at the end of opening or closing operation, with led indications for inputs. It is compatible with an extra radio by SRT Band and SRT card respectively.

2. OPERATING INSTRUCTIONS

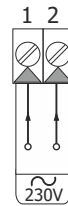
Automatic manoeuvres are carried out using the START, STOP, PED, switches and if required using the radio buttons. The manoeuvre finishes under any of the following conditions: by activating the corresponding End of Process or due to working time finishing. Activating STOP will immediately stop the manoeuvre and new instructions will be required to start again. Activating the Safety Contact during the closing manoeuvre will cause the inverse, activating the opening manoeuvre. The contact for Garage Light is activated 0,5 sec. before starting the opening manoeuvre and deactivated 3 min. after starting. To regulate engine power selected in POWER regulator, is applied after 2 sec. from starting the manoeuvre. Suspension time (selected in the working time programme) is the time before finishing the manoeuvre that the engine will work in suspension mode. In POWER SLOW we can select engine speed in suspension period when I7 is ON.

3. CONNECTIONS

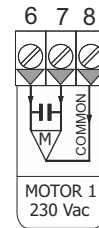


3.1 POWER SUPPLY & MOTOR CONNECTIONS

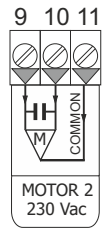
POWER SUPPLY



MOTOR 1

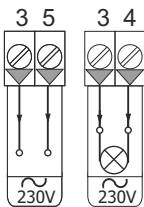


MOTOR 2

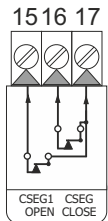


3.2 TERMINAL CONNECTIONS

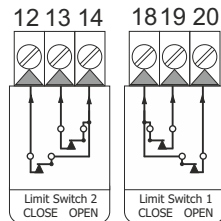
GARAGE LIGHT



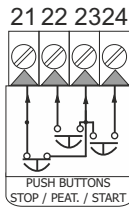
SAFETY CONTACT



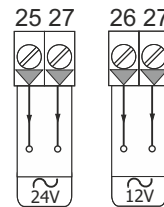
LIMIT SWITCHES



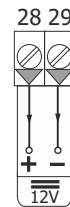
TERMINAL BUTTONS



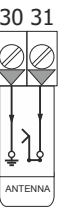
ACCESSORIES POWER SUPPLY



ELECTRO-LOCK



ANTENNA



4. POTENTIOMETERS

POWER (RED)



OPTION 8 OFF - Motor Power regulation.
 OPTION 8 ON - Motor 1 Pressure Switch.
 Rotate LEFT to decrease and rotate RIGHT to increase.

POWER SLOW (GREEN)



OPTION 8 OFF & 7 ON - Soft Stop Motor regulation
 OPTION 8 ON - Motor 2 Pressure Switch Inhibition time
 Rotate to LEFT to decrease and rotate to RIGHT to increase.

AUTOMATIC CLOSING TIME (BLUE)



Regulates the waiting time before the automatic close. Turn LEFT to decrease and RIGHT to increase. Minimum - 3 seg. Maximum - 120 seg.

5. BRIDGE SELECTORS

Radio Internal / External



Lower selector - External

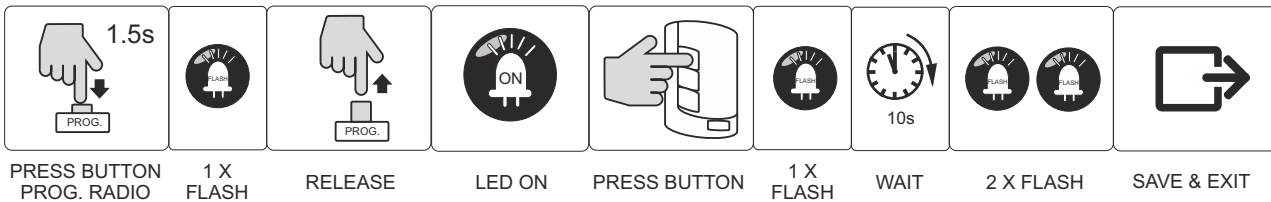


Upper selector - Internal

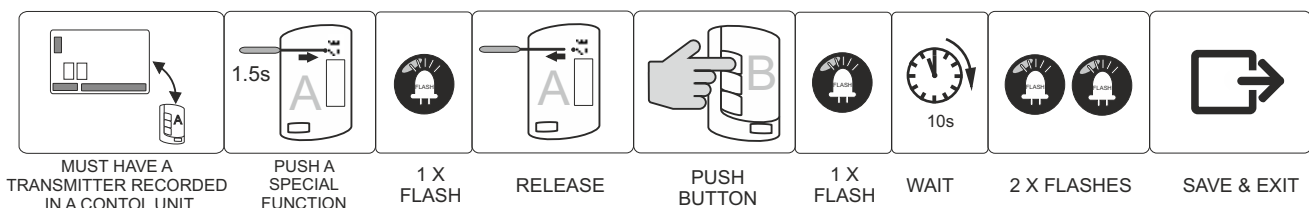
6. OPTIONS

1	AUTOMATIC CLOSING		- Door closes automatically after waiting the a.c. time.
			- Door does not close automatically.
2	DISABLE STOP OPENING		- The ALTER button (23-24), transmitter or GATE 1 button, can't stop the door on opening.
			- Door stops on opening with transmitter, GATE 1 or ALTER (23-24) buttons.
3	RADIO PROGRAMMING		- Not allowed.
			- Allowed.
4	INVERSION SHUT		- Before opening, the electro lock and closure relay are activated.
			- Normal opening with electro lock.
5	PHOTO ELECTRIC CELL OPENING/ BAND		- CSEG1 input (15-17) works like a 8k2 security band, stop and inverts the manoeuvre 2 sec. On closing, stops & inverts the manoeuvre.
			- CSEG1 input (15-17) works like a photo cell, stops the manoeuvre.
6	FLASING LIGHT		- Flashing.
			- Fixed.
7	BUFFER CLOSING		- At the end of opening and closing manoeuvre, the door does a soft stop. (with option 8 ON, option 7 does a impulse every 3 hours.)
			- Without soft stop.
8	HYDRAULIC DRIVE		- Engine power always maximum and without soft stop.
			- Normal engine operation.

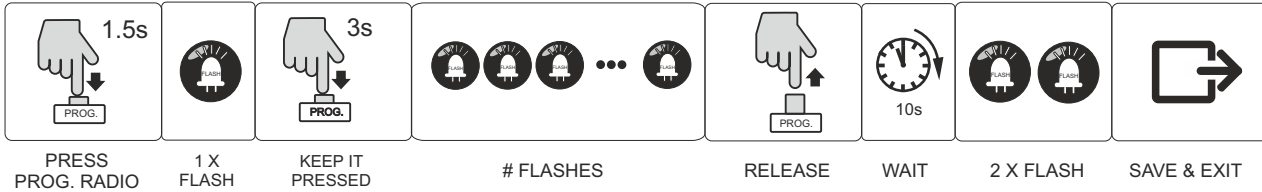
7. PROGRAMING A TRANSMITTER



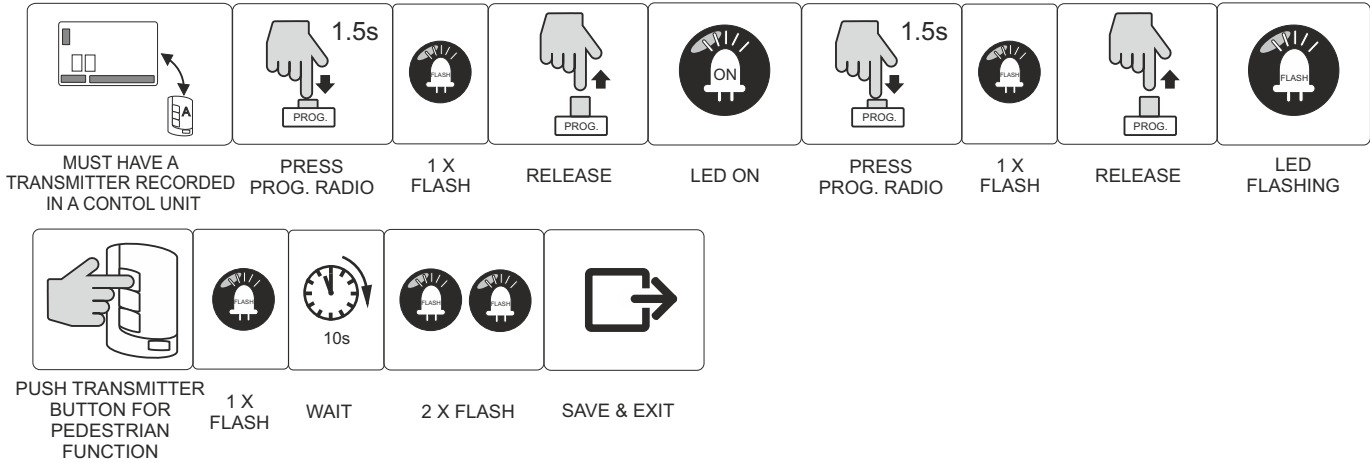
7.1 TRANSMITTER RADIO PROGRAMMING



7.2 MEMORY RESET

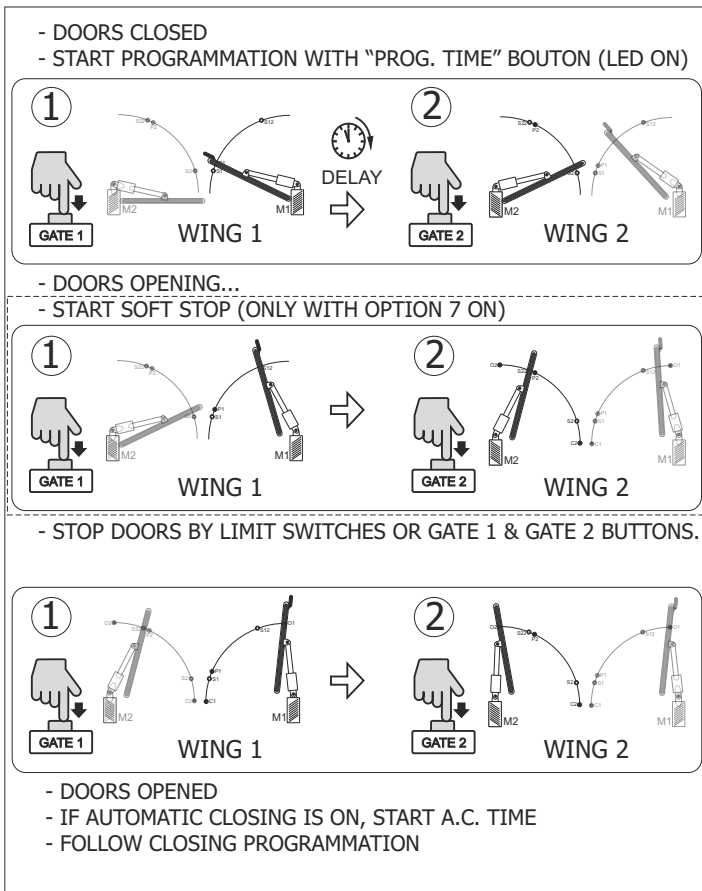


8. TRANSMITTER PEDESTRIAN CHANNEL PROGRAMMATION

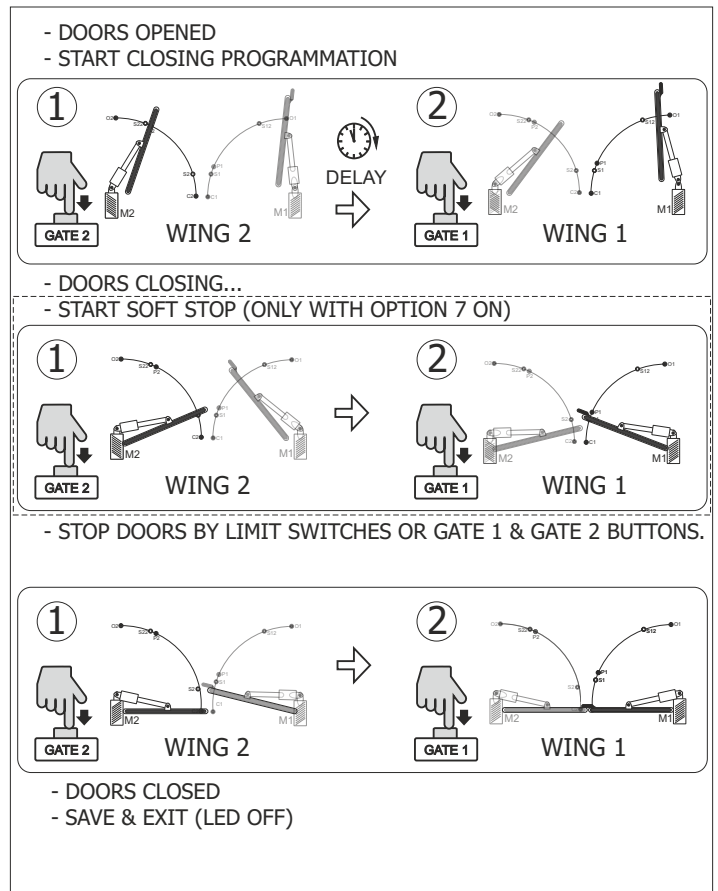


9. DIGITAL TIME PROGRAMMING for working and automatic closing.

OPENING PROGRAMMATION

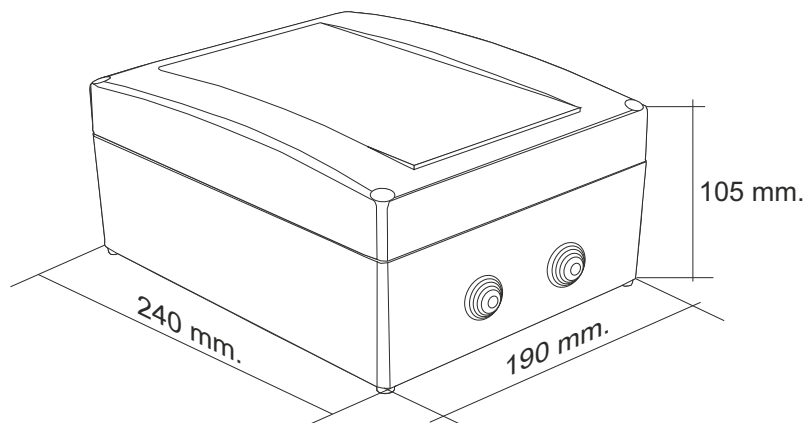


CLOSING PROGRAMMATION



IF IS USED ONLY A ONE MOTOR, MAKES THE PROGRAMMING PROCESS WITH GATE 1 BUTTON.

10. BOX HOUSING



TECHNICAL SPECIFICATIONS

Alimentation	230V AC +/- 10%
Motor Power	550 W (0,74 HP)
Accessory alimentation output	12V/24V AC 250mA
Automatic closing time	5 seg a 2 min
Working time	Max. 2 min
Code Combinations	72.000 Billions of codes /4000 binary
Number of Codes	255 codes
Code Programming	Automatic learning
Function Selector	Transmitter memorized
Garage Light Time	3 min.
Garage Light Contact	10 A a 230V
Frequency	433,92 Mhz (868 Mhz)
Normative	Conforms to ETS 300-220/ETS 300-683
Sensibility	Better than -100dBm
Range	Max. 60 m
Antenna	Built in
Working Temperature	-20 to 85°C

CE DECLARATION OF CONFORMITY
For more information visit the website www.aerf.eu

WARNING!!

- Equipment installation and start-up, can only be executed by qualified personal.

