

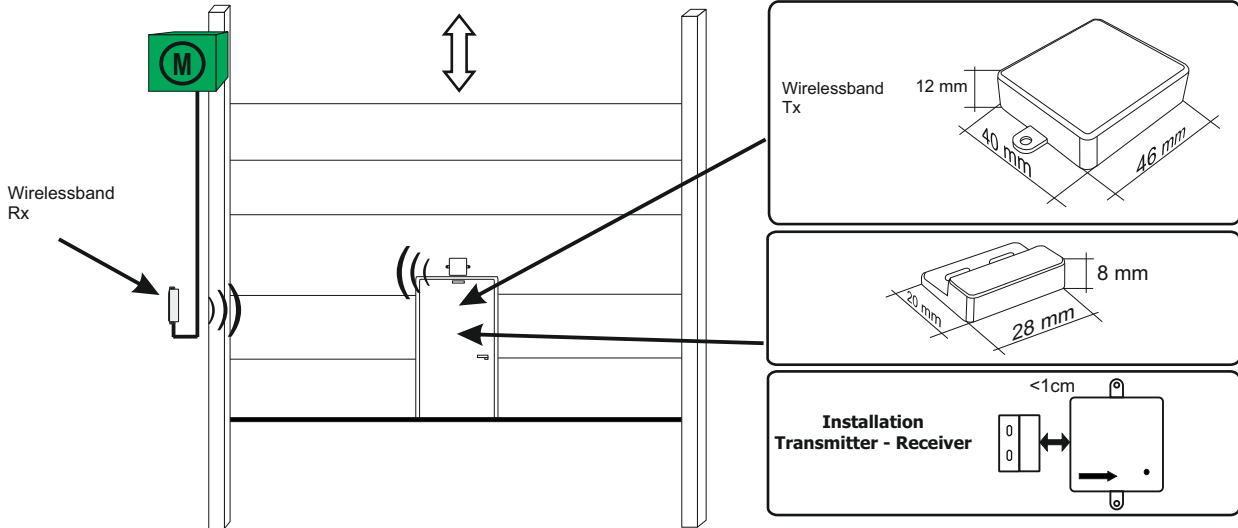
- IP55
- 2 yrs Battery
- 100m
- 1 Ch Output
- 14 tx

Translation of the original instructions

1. GENERAL

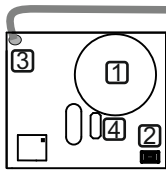
Kit composed by a transmitter and a receiver previously memorized. The specific application is to perform a safety wireless connection when a pedestrian pass through the pedestrian door. STOP function will be activated when the door is opened.

2 APPLICATION



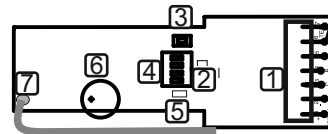
3. TRANSMITTER & RECEIVER

TRANSMITTER



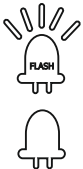
- 1- Battery CR2032
- 2- Programming push button
- 3- Antenna
- 4- Frequency bridge selector

RECEIVER



- 1- Terminals
- 2- LED 1
- 3- Push button
- 4- DIP - Switch
- 5- LED 2
- 6- Buzzer
- 7- Antenna

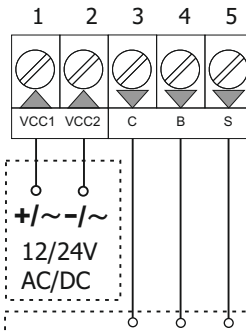
3.1 LED INDICATOR



LED ON - Security OK

LED OFF - Obstacle detected

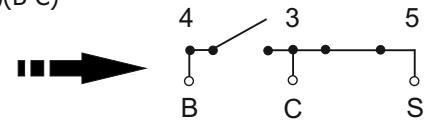
3.2 RECEIVER TERMINALS



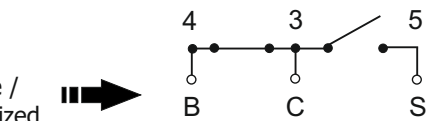
OUTPUT TYPE

- Contact NC (3-5)(C-S) (Standard operation)
- Contact NO (3-4)(B-C)

Safety OK



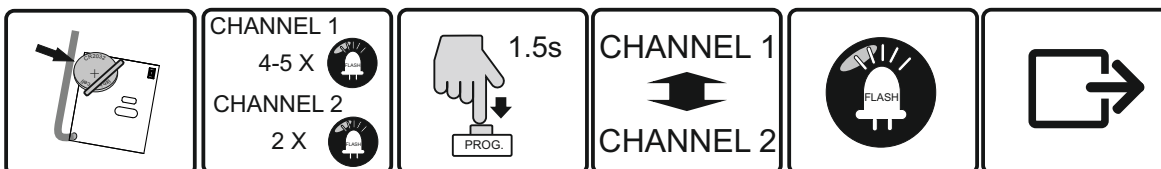
Fail / Sensor active / Sensor not memorized



3.3 RECEIVER OPTION SELECTOR

CLASS 2		Enabled (Normative UNE-EN 13849-2)
		Disabled (by default)
TRANSMITTER FREQUENCY		869,85 Mhz (Transmitter with bridge selector)
		868,95 Mhz (Transmitter without bridge selector)
RECEIVER TYPE TEST		N.O. contact
		N.C. contact
AUTOMATIC FREQUENCY AGILITY		Enabled
		Disabled

4. RECEIVER CHANNEL SELECTION (ONLY FOR 2 OUTPUTS RECEIVER - WIRELESSBAND 2R & 2OSE)



1. INSERT BATTERY

2. CHANNEL STATUS (CHANNEL 1 DEFAULT)

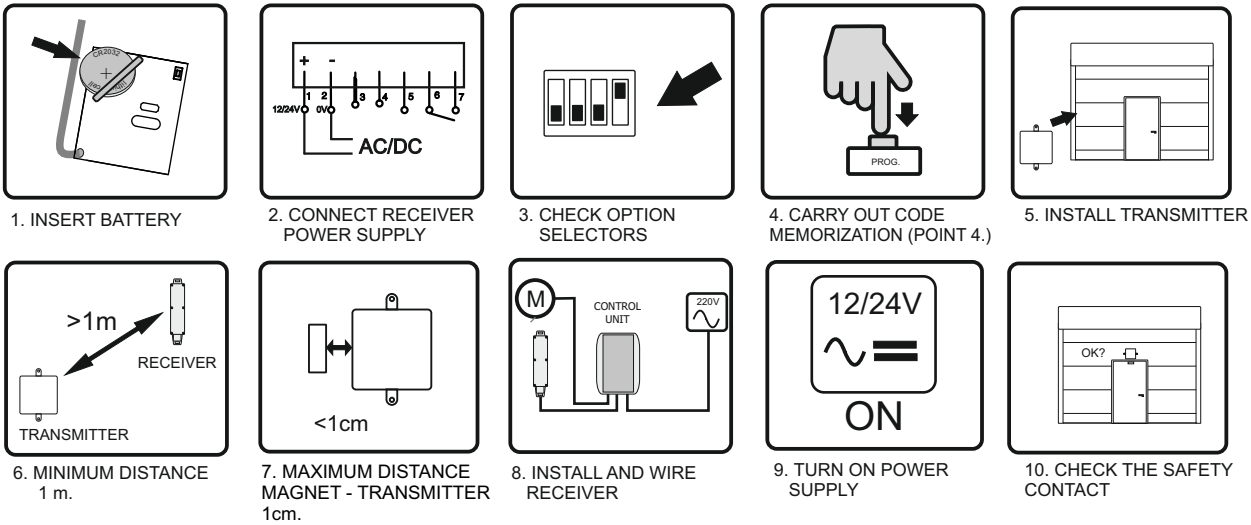
3. PRESS TRANSMITTER TO CHANGE CHANNEL

4. CHANNEL CHANGED

5. LED FLASH

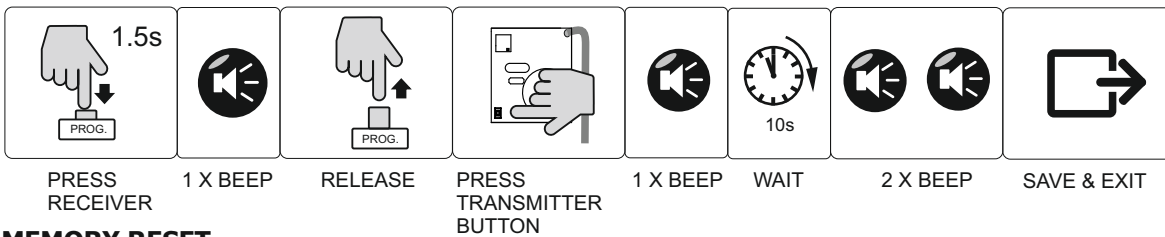
6. SAVE & QUIT

5. START-UP



6. PROGRAMMING PROCESS

CODE MEMORIZATION



MEMORY RESET



MEMORY FULL INDICATOR

Several beeps for 10 seconds when trying to memorize a new transmitter.

LOW BATTERY INDICATOR

4 beeps each time a message is received from a programmed transmitter. Both, warning LED and buzzer are activated simultaneously.

TECHNICAL SPECIFICATIONS

Receiver supply voltage	12/24 AC/DC
Transmitter supply voltage	2x lithium battery 3V DC type CR2032
Receiver Output	2 Relay free voltage
Receiver Power consumption	0.5 W - 12 V / 1,2 W - 24 V
Battery life	4 years
Ball pressure test (IEC 695-10-2)	PCB (125°C) WRAP (75°C)
Pollution degree	2
Protection class (IEC 60529)	Ip55
Frequency Channels	868.95MHz & 869.85MHz
Range	100m
Working temperature	-35°C to +55°C
Rated transient over voltage	330V
Transmitter power consumption	Transmitting 17mA / stand by 16uA
Reaction time	60 ms.

CE DECLARATION OF CONFORMITY
For more information visit the website www.aerf.eu

WARNING!!

- Installation, start-up, modification and updating of the system may only be carried out by a qualified person.
- Switch off the operating voltage before working on the system.
- The system doesn't have fuse protection. It is recommended include exterior protection from 100mA to 250mA.
- In case of any hypothetical issue, please do a memory reset (point 6.).

