

- IP55
- IP67
- 8 yrs Battery
- 100m
- 1 Ch Output
- 14 tx

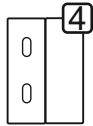
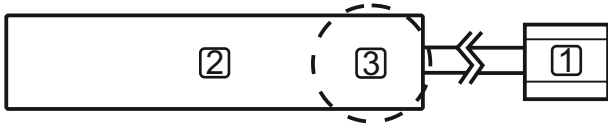
1. GENERAL

One channel wireless system communication for resistive safety edges.

1.1 SAFETY INDICATIONS

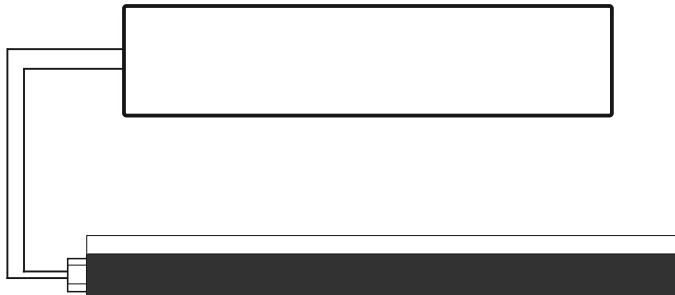
- Reaction time < 60ms.
- EN13849-1 Cat2 PL-C with TEST.
- Device with SELV/PELV Power Supply

2. TRANSMITTER

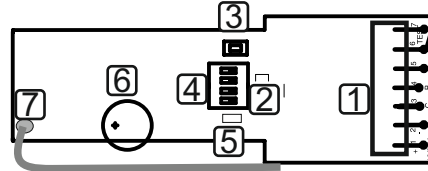


- 1- Safety edge connector
- 2- Potted TX Wirelessband
- 3- Magnetic zone
- 4- Magnet

2.1 TRANSMITTER REGULAR CONNECTIONS

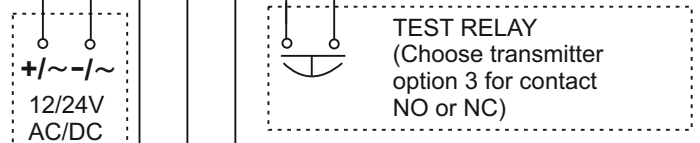
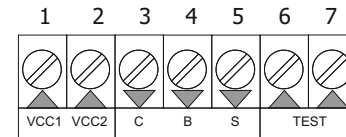


3. RECEIVER



- 1- Terminals
- 2- LED 1
- 3- Push button
- 4- DIP - Switch
- 5- LED 2
- 6- Buzzer
- 7- Antenna

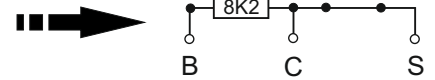
3.1 RECEIVER CONNECTIONS



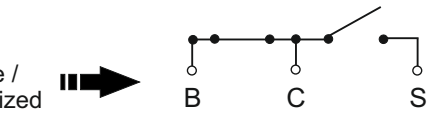
OUTPUT TYPE

- Contact (3-5)
- Resistive safety edge 8k2 (3-4)

Safety OK



Fail / Sensor active / Sensor not memorized



3.2 LED INDICATOR

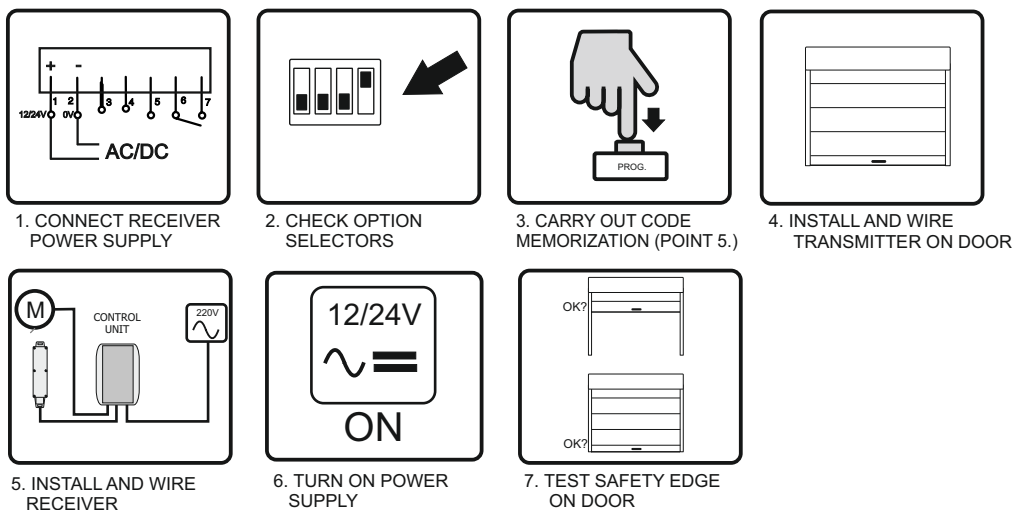
LED ON - Security OK

LED OFF - Obstacle detected

3.3 RECEIVER OPTION SELECTOR

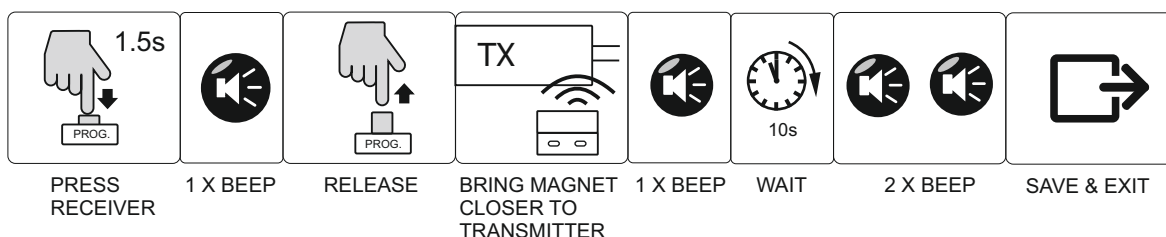
CLASS 2		Enabled (Normative UNE-EN 13849-2)
		Disabled (Default)
TRANSMITTER FREQUENCY		869,85 Mhz (same as transmitter)
		868,95 Mhz (same as transmitter)
RECEIVER TYPE TEST		N.C. contact
		N.O. contact
AUTOMATIC FREQUENCY AGILITY		Enabled
		Disabled

4. START-UP



5. PROGRAMMING PROCESS

CODE MEMORIZATION



MEMORY RESET



MEMORY FULL INDICATOR

Several beeps for 10 seconds when trying to memorize a new transmitter.

LOW BATTERY INDICATOR

4 beeps each time a message is received from a programmed transmitter. Both, warning LED and buzzer are activated simultaneously.

TECHNICAL SPECIFICATIONS

Receiver supply voltage	12/24 AC/DC
Transmitter supply voltage	1x AA lithium battery 3.6v
Battery life	8 years
Receiver memory	7 transmitters
Receiver Output	Relay, micro disconnection 1B
Receiver Power consumption	0.5 W - 12 V / 1,2 W - 24 V
Ball pressure test (IEC 695-10-2)	PCB (125°C) WRAP (75°C)
Pollution degree	2
Protection class (IEC 60529)	Ip55 (RX) / Ip67 (TX)
Frequency Channels	868.95MHz & 869.85MHz
Range	100m
Working temperature	-35°C to +55°C
Software	Class A
Rated transient over voltage	330V
Transmitter power consumption	Transmitting 17mA / stand by 16uA
Machine Security Normative	13849-1 2015 PL-C Cat 2, with TEST
Reaction time	60 ms

CE DECLARATION OF CONFORMITY
For more information visit the website www.aerf.eu

WARNING!!

- Installation, start-up, modification and updating of the system may only be carried out by a qualified person.
- Switch off the operating voltage before working on the system.
- The system doesn't have fuse protection. It is recommended to include exterior protection from 100mA and to 250mA.
- In case of any hypothetical issue, please do a memory reset (point 4.).

